






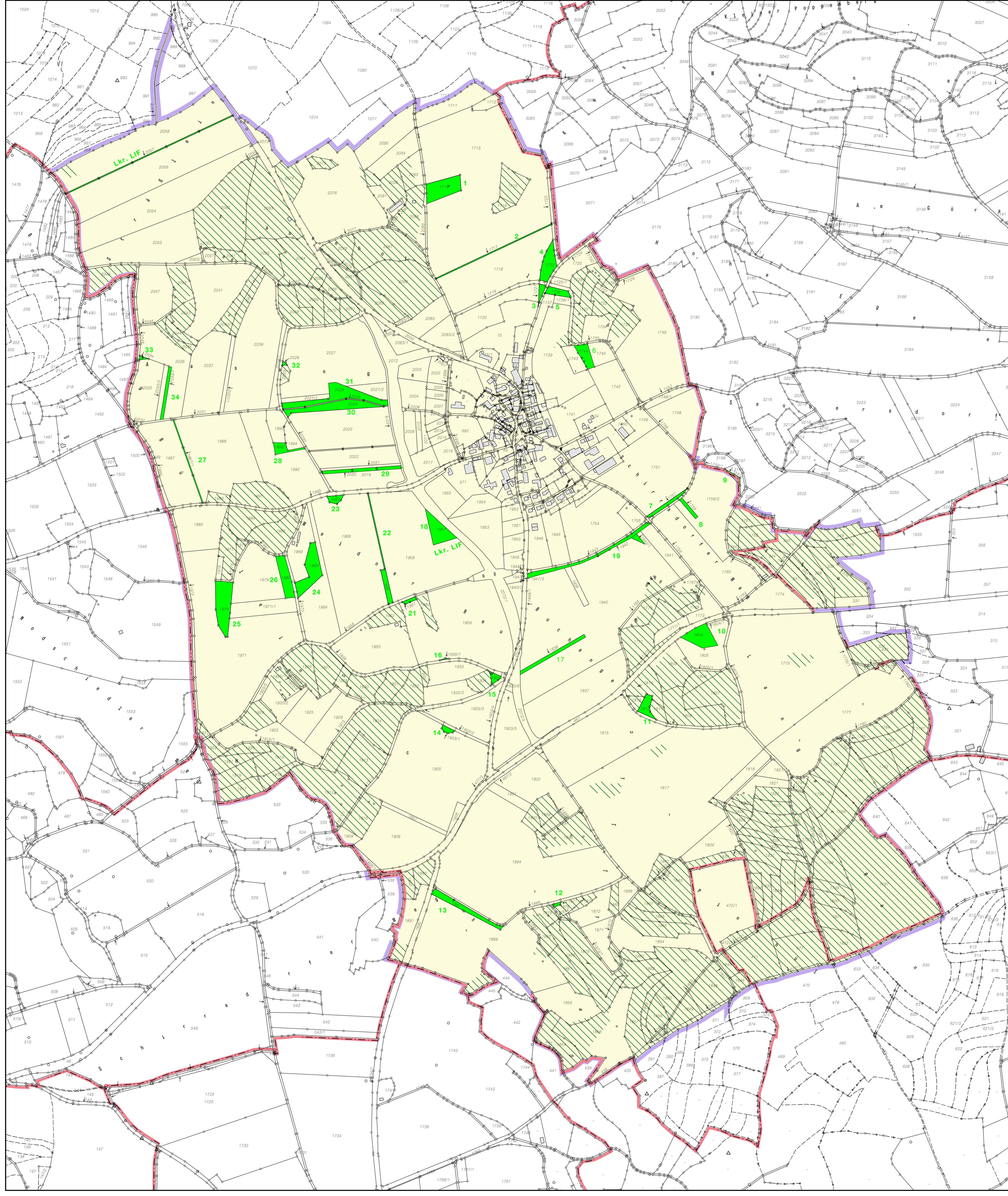


- Zeichenerklärung**
-  Gemeinde- und Gemarkungsgrenze
  -  Gemarkungsgrenze
  -  Verfahrensgrenze
  -  Flurstücksgrenze (num.)
  -  Flurstücksgrenze (graph.)
  -  123 Flurstücksnummer
  -  Schutzflächen/Lerchenstreifen



ALE Oberfranken  
 Mdschiedel  
 VKZLE 200119  
 Stadt Weismain  
 Landkreis Lichtenfels  
 Landschaftspflegeflächen  
 Feldlerchenstreifen

